



## BEYER CONSTRUCTION

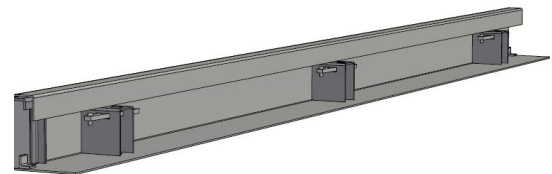


Beyer Construction plays a key role in building the roads and streets needed to support Houston's booming population. Beyer has seven road building crews that utilize the Speed Screed®. Each Beyer crew consists of approximately 25 skilled tradesmen who finish more than 1,200 cubic yards of concrete a week, which equates to over 8,000 cubic yards combined per week, and more than 400,000 cubic yards per year. Talk about impressive! In addition to the screeds MFC and CPSI supply, Beyer also uses MFC Base-line® forms in all paving operations.

The relationship of MFC, CPSI and Beyer Construction illustrates a cooperative effort that leads to unparalleled success at all three levels of manufacturer, supplier and contractor.



*Houston Subdivision Paving*



Beyer utilizes specialty manufactured Baseline™ Forms which facilitate fast & accurate form setting and stripping.