



METAL FORMS CORPORATION
SINCE 1909

Form To Finish™

A PUBLICATION FOR MFC DEALERS

WINTER 2023



MEL'S METTLE

This "Mel's Mettle" is a revisit to the one published 3 years ago before CONEXPO 2020

TRADESHOWS

Attending trade shows has been part of my DNA for a long time. No, I won't tell you how many years, but back when I started traveling to construction expos, a guy by the name of Richard Milhous Nixon was our Commander in Chief, Apollo 12 blasted off to the moon, the Boeing 747 had its first test flight and the populace was jiving to "Aquarius" by the 5th Dimension and flocking to the silver screen to enjoy "Butch Cassidy & the Sundance Kid".

As much as times have changed, the look and feel of trade shows remains the same. With a lanyard swinging around your neck, you stroll into a large convention hall and see aisle upon aisle, booth upon booth. Maybe you notice a reduced amount of booth girls, but there are still plenty of slick, 4-color brochures to stuff into your complimentary tote bag.

So why do trade shows like CONEXPO remain popular and well-attended when the world around us is evolving at a jaw-dropping pace? After all, Google answers questions for the world 24/7, 365 days a year and networking occurs on-demand and online at LinkedIn. Despite these miraculous advancements, trade shows still offer great marketing opportunities ranging from visibility to credibility.

Trade shows are still about face-to-face interaction. Trade shows are still about relationships. That's why MFC will be exhibiting at CONEXPO. MFC believes that trade shows establish a platform for reaching-out to existing clientele, meeting new customers, as well as continuing to build upon the established MFC brand.

Make plans now to visit MFC at CONEXPO (Booth #C-22417) but don't expect a free lanyard or a complimentary tote bag.

What you can expect is a friendly greeting and expert information about our complete line of forms and screeds for concrete construction.



March 14-18, 2023
Las Vegas, Nevada
Booth: C-22417
Central Hall



2023 DEALER PROGRAM

As an MFC Platinum Dealer, you will receive exclusive benefits designed to assist in your business' success.

Visit www.metalforms.com to view and download.



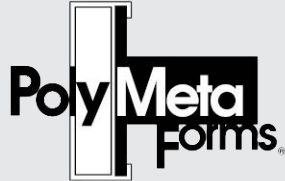
www.metalforms.com



METAL FORMS CORPORATION
SINCE 1909



Steel Forms



Plastic Forms



Concrete Finishers

- Tom Miller Chief Executive Officer
temiller@metalforms.com
- Tim Fox President
tfox@metalforms.com
- Dan Block Executive Vice President
dblock@metalforms.com
- Lynn Kuykendall VP. Communications - Digital Experience
lynnk@metalforms.com
- Matt Michel VP. National Accounts
mlmichel@metalforms.com
- Chris Grandt VP. Dealer Sales
cgrandt@metalforms.com
- Alex Topczewski Dealer Account Manager
alex@metalforms.com
- Jason Jick Purchasing & Dealer Sales
jjick@metalforms.com

3334 NORTH BOOTH STREET - MILWAUKEE, WISCONSIN 53212
U.S.A. Phone: 414-964-4550
Email: info@metalforms.com / Web: www.metalforms.com



FIELD REPORT



MFC at LAX

When one thinks of Los Angeles, some alluring images come to mind, like beautiful and sunny Pacific beaches, the glitz and glamor of the movie industry and perhaps the pageantry of the New Year's Day Parade. On the other hand, "LA" may conjure up thoughts of dense smog and traffic congestion. MFC can't help with the smog, but it's doing its part in relieving the bottlenecks for people traveling to and from the fourth-busiest airport in the world and second busiest in the US.

Los Angeles International Airport (LAX) is in the process of a massive construction project as it prepares for the 2028 Olympic Games. The last time LA hosted an Olympics was in 1984 when 92,000 spectators attended the XXIII Olympiad. There will be significantly more people in 2028 and making infrastructure improvements to facilitate the increased traffic volume are well underway.

Here is an update on the impressive list of "Who's Who" contractors using MFC products at the giant LAX modernization project.



continued on next page

continued from previous page

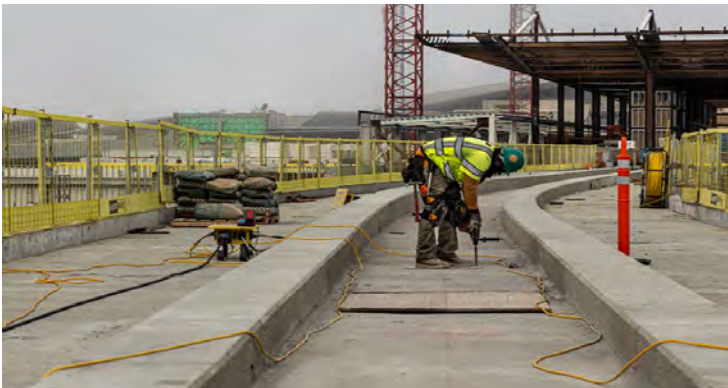


LINXS Constructors is a joint venture (Fluor Corp, Balfour Beatty, Dragados USA and Flatiron) responsible for the construction of the Automated People Mover (APM) at LAX. The APM is a 2.5 mile electric train system that will connect travelers to all terminals as well as all types of transportation options.



The traveling surfaces (concrete plinths) for the trains were constructed with special steel forms provided by MFC.

MFC also provided forms for the APM's at the Orlando International Airport (MCO) and Tampa International Airport (TPA).



As one of California's earliest general contractors, Griffith Company has been engaged in Southern California road and airport construction since its inception over a century ago. Griffith Company is heavily involved in the LAX makeover and is using MFC



forms on the following airport projects: "Delta Sky Way" (revamp of Terminals 1 & 2), United Terminal Apron & Hanger, Alaska Terminal Apron & Hanger, Southwest Terminal and the

Midfield Satellite Concourse (MSC). In total, Griffith has purchased close to 2 miles of MFC forms for placing LAX taxiways and runways.



Sully-Miller has served the Southern California infrastructure market since the early 1920's and is deeply involved in the LAX reconstruction effort. The contractor called MFC to provide steel forms for 48" high barrier to serve as perimeter fencing as well as special paving forms for various LAX taxiways. Sully-Miller is no stranger to this type of construction as it has worked on 38 local airports throughout Southern California, including Burbank, John Wayne, Long Beach and Ontario.



HENSEL PHELPS
Plan. Build. Manage.



Hensel Phelps is one of the largest general contractors and construction managers in the US. At LAX they are involved in several

airport updates. One of these improvement projects is the new concrete pavement at the Delta International Terminal which was placed with the use of MFC paving forms.



Form To Finish[™]

Metal Forms Corporation

3334 North Booth Street
Milwaukee, WI 53212

PRESORTED
FIRST CLASS MAIL
U.S. POSTAGE
PAID
Milwaukee, WI
PERMIT NO. 1

Form To Finish[™]

NEW

OWNERSHIP & DISTRIBUTION



Sterling Tool Company LLC, a newly formed corporation and a Powered by Russo entity, has purchased the Sterling Wheelbarrows operations

from MFC. Sterling Tool Company is committed to continuing the high standards of quality and durability enhanced by MFC and associated with the Sterling brand since it's founding in 1904.

In conjunction with ownership change, DiStefano Sales Co. will be the exclusive distributor for Sterling Tool Company. DiStefano Sales is a respected multi-generational business with a leadership team focusing on representing the legendary Sterling brand and serving the clients who have supported the product for decades.

All inquiries concerning Sterling wheelbarrows and operations should be directed to:



DSC
DiStefano Sales Company
9001 Exchange Ave.
Franklin Park, IL. 60131
Phone: (800) 237-0007
E-Mail: info@distafanosales.com
Web: www.distefanosales.com