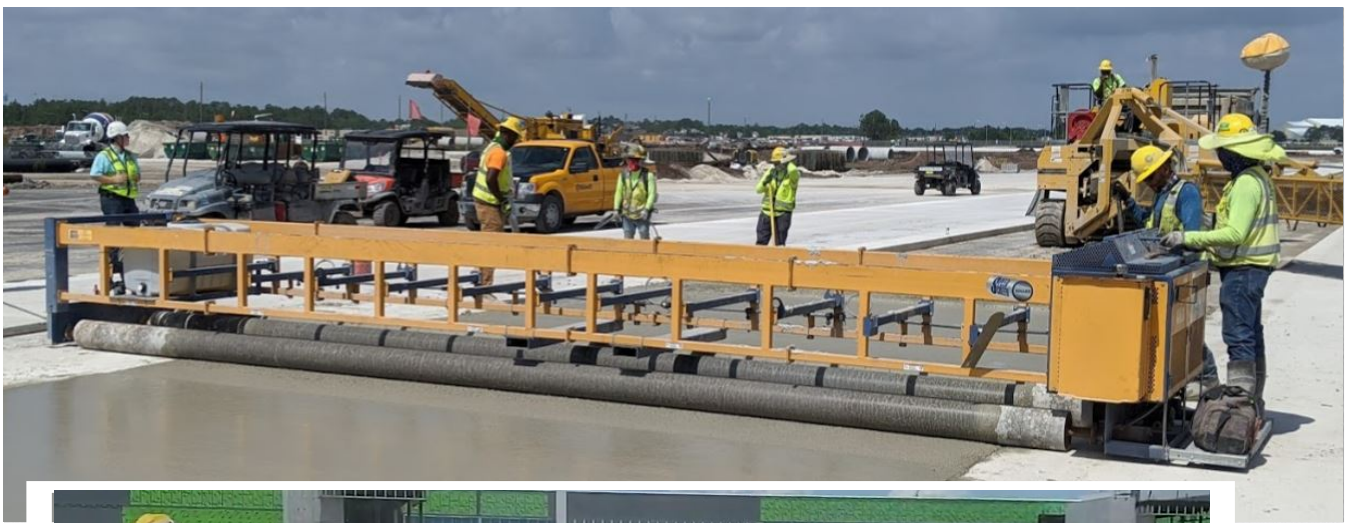
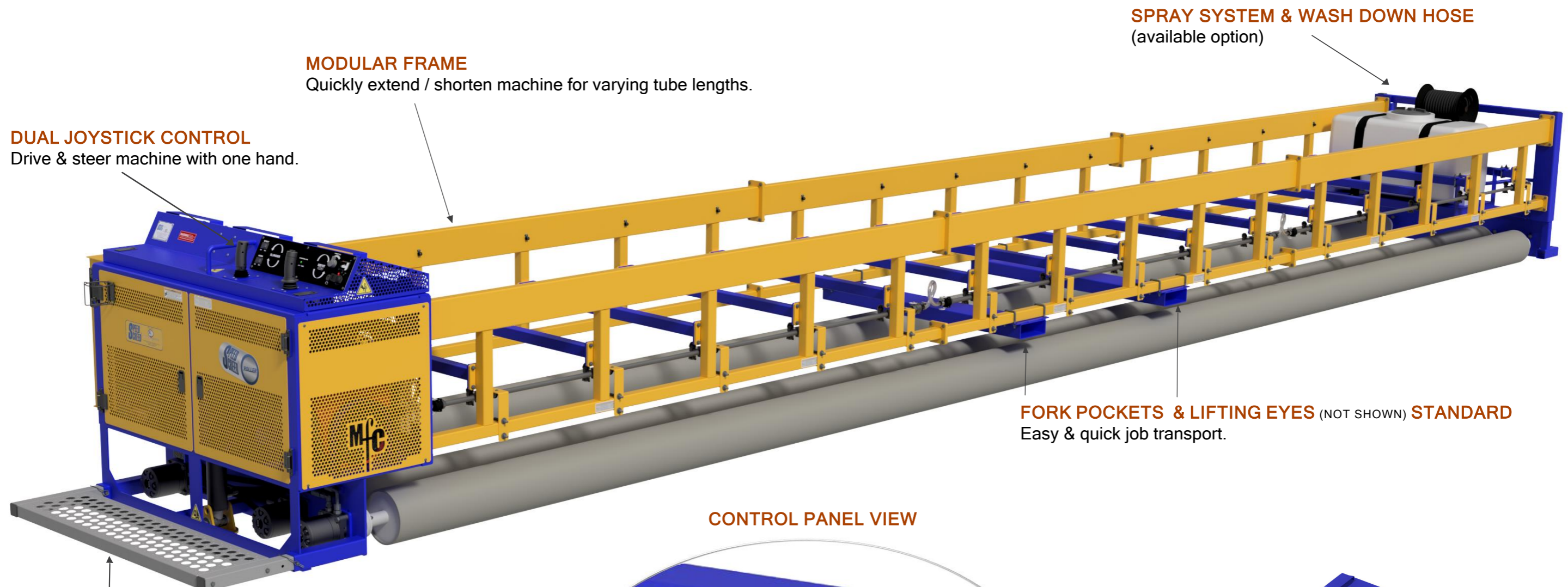




METAL FORMS CORPORATION
SINCE 1909





SPRAY SYSTEM & WASH DOWN HOSE
(available option)

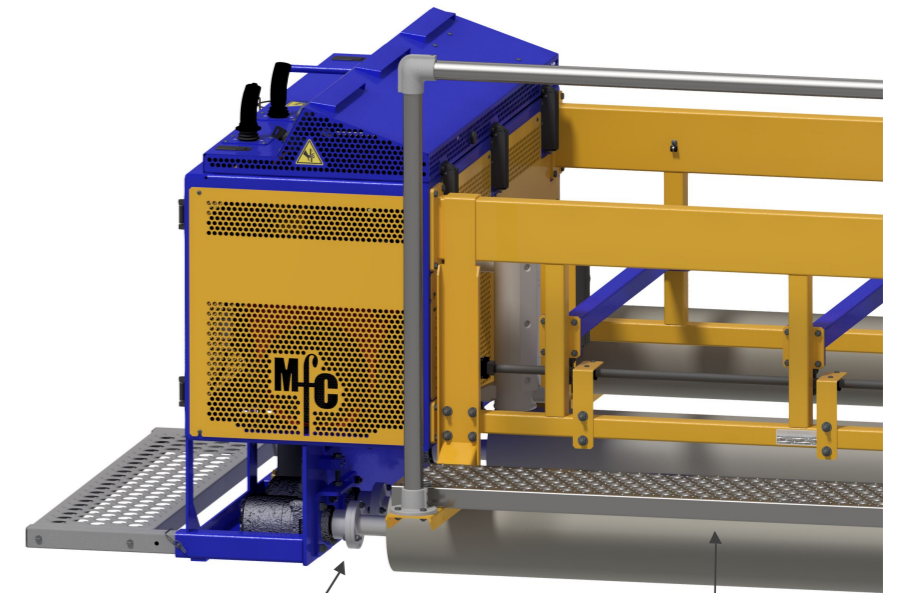
MODULAR FRAME
Quickly extend / shorten machine for varying tube lengths.

DUAL JOYSTICK CONTROL
Drive & steer machine with one hand.

FORK POCKETS & LIFTING EYES (NOT SHOWN) **STANDARD**
Easy & quick job transport.

REMOVABLE OPERATOR PLATFORM
Easily remove operator platform for clearance.

CONTROL PANEL VIEW



MACHINE SPECIFICATIONS

- Kohler 35 hp engine
- Working load compensation
- 1" front "Slinger" tube adjustment
- Weight (15ft.): 3,350 lbs
- Weight per add'; ft: 120lbs
- Max. width: 32 ft (5,6,7,8,9 & 10 ft extensions)
- Fuel Tank: 12 gal
- Roller tube size: 8.5" DOM (.25" wall thickness)
- 16" leg stroke

QUICK-CHANGE TUBE COUPLERS
Remove just six bolts /roll tubes in and out of machine.

WALKWAY / WORK PLATFORM
(available option)



METAL FORMS CORPORATION
SINCE 1909

3334 North Booth Street, Milwaukee, WI 53212
Ph: 414-964-4550 / Fax: 414-964-4503
www.metalforms.com